



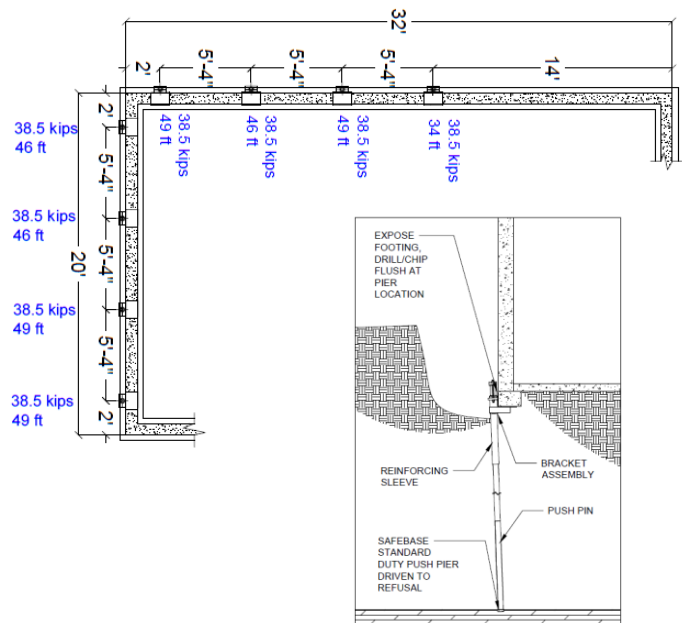
# CASE HISTORY

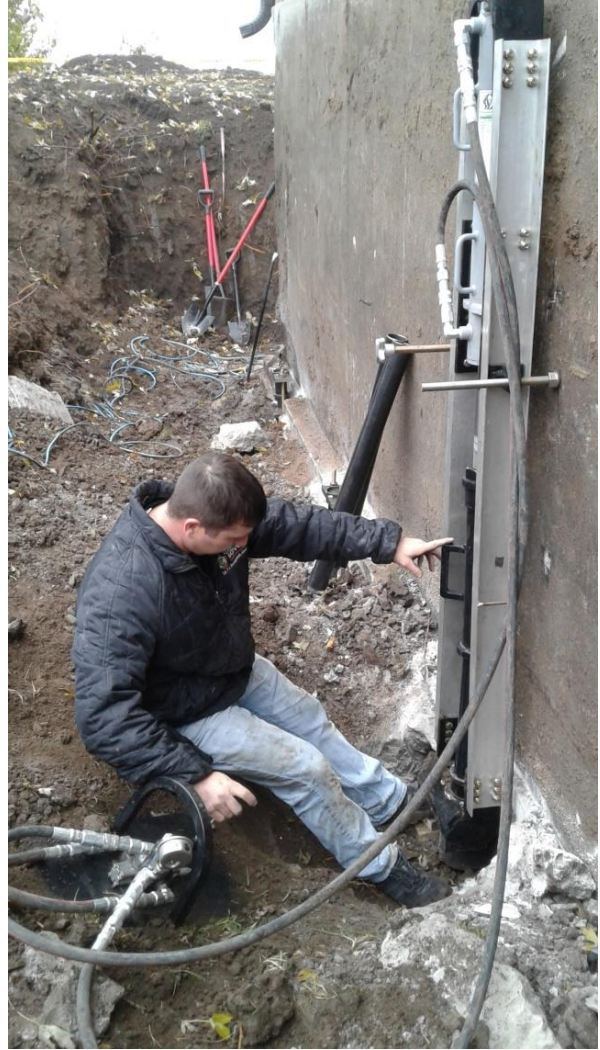
SAFEBASE™ 2.875" STANDARD DUTY PUSH PIERS

## RESIDENTIAL FOUNDATION RESTORATION



Lamunyon Restoration was contacted in regards to concerns of cracking in the brick façade of their home. A site visit was made and it determined that there was approximately 1-1/2" of settlement in the south east corner of the home. A plan was made to support the settling foundation with a total of Eight SafeBase™ 2.875" Standard Duty Push Piers. The piers were driven to an average depth of 46 feet with a force of 38.5 kips per pier.





After the SafeBase™ 2.875" Standard Duty Push Piers had been advanced to competent bearing strata, a series of SafeBase™ Lift Cylinder Assemblies were mounted onto the bracket assemblies to prepare for a lift. A full recovery of the one and a half inches of settlement was achieved, with the cracks in the foundation walls and brick closing during the lift. The homeowner was pleased to see the results of the restoration performed by Lamunyon. The project was completed in approximately two and a half days during the month of November, 2017.



Lamunyon Restoration  
1541 18<sup>th</sup> Rd  
Clay Center, KS 67432  
785-630-5639



[www.lamunyon.com](http://www.lamunyon.com)

[www.safebasementsinc.com](http://www.safebasementsinc.com)