

SafeBase™ Wall Anchors Cold Spring Granite, Cold Spring, MN



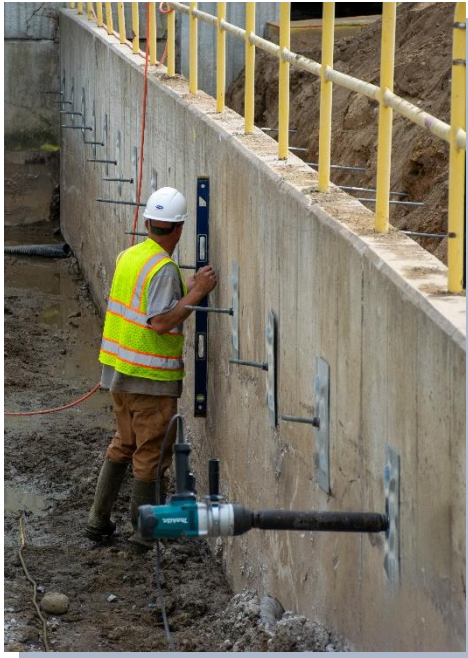
August 2023

SafeBasements of Minnesota was contacted to design a wall straightening system for a 100' retaining wall near a loading dock at Cold Spring Granite in Cold Spring, MN. The wall was tipping in towards the loading dock and a repair plan was needed to prevent it from tipping further as well as pull it back into place. To achieve this, SafeBasements created a set of plans involving 18 SafeBase wall anchors placed every 5 ½ feet along the span of the wall.

Before the installation process began, excavation was performed by third parties directly behind the retaining wall to assist with the straightening of the wall. Once



Retaining wall before & after wall anchors



*Top: Pulling back wall
Bottom: Installed earth plate*

*Top: Driving anchor rod
Bottom: Installed wall anchors*

installed, the anchors were tightened until the wall was pulled back into its original place. Thus, the SafeBase wall anchors not only successfully restored the wall back to its original place, but also provided a long-term solution to keep it there.

SafeBasements of MN
60335 US Highway 12
Litchfield, MN 55355
320-593-8729
www.safebasements.com



SafeBasements, Inc.
28272 Minnie Street
Paynesville, MN 56362
1-888-963-6892
www.safebasementsinc.com